



VOLUNTEER Frequently Asked Questions Answered

QUESTION	ANSWER
Do I need any experience?	Most of the official roles need no prior experience. We'll make sure you're allocated to a role that is suitable for your experience.
Do I need any special skills?	<p>No. Apart from being reliable and on-time, there are no specific skills needed to officiate at an event.</p> <p>Always remember: - BE ON TIME Don't forget: - BE ON TIME And by the way: - BE ON TIME</p>
I want to register to work on the 2024 MSS Safety Rally Barossa. What do I need to do?	<p>Every event you do needs a separate registration form. They do not carry over from previous events</p> <p>The 2024 registration form is here: - https://rallysa.com.au/events/rally-barossa/officials-registration/</p> <p>Fill out the form and hit submit. Be sure to note any special requests – travelling with someone, work with a certain stage commander, etc</p>
What happens once the form is submitted?	We enter your details onto our database and begin to work out allocations to various roles. In due time, the details you will need are sent to you by email. Look for it a week or two out from the event
Why do I need to register at all?	Registration is important – without it, we don't know you want to help. Also, registration triggers MotorSport Australia insurance, and lets us know of any personal or medical things we need to be aware of. It does not carry over and needs to be done for every event you do. Remember, registration is a commitment – it means we rely on you turning up
I have heard about the RALLY GOODY BOX. Please explain	<p>The Rally Goody Box contains the event officials pack – everything you need like stickers, maps, caps, tickets, vest, SAPOL notice, credentials, and lanyard etc.</p> <p>It often contains little gifts from our sponsors too.</p> <p>It is given to you by a senior official on location when you work on event – Stage Commander, Course Car Manager etc</p> <p>Note: - vest is supplied by MSS Safety and must be returned for future events. Please be sure to return it to your stage commander, or Rally HQ at Rowland Flat</p>
How do I know where to go?	This is usually done via a detailed email, and a map showing the location of the meeting point sent to you a few weeks before the event, in early October



VOLUNTEER Frequently Asked Questions Answered

	<p>Once allocations are done, we select various meeting points on event where your senior official can get you all together and give any last-minute briefings, and make sure everything is covered.</p>
<p>How will I know what to do on the day?</p>	<p>The Reference Manual has lots of information on what you will need to do on the day. Of course, there will also be Senior Officials/Stage Commanders available to answer any questions you might have on the day.</p> <p>We also offer some short YouTube videos to show you how the main tasks are carried out. You can find them here:- https://www.youtube.com/@rallyofsa/videos</p>
<p>Do I get involved in stage set up?</p>	<p>Yes. Everyone does to some extent. There are some key things to organise like tying off gates, taping off side roads, erecting signage etc. Refer to your manual if in doubt, watch the videos, and listen to your stage commander or people in set up cars</p>
<p>What are the various roles I might end up doing?</p>	<ul style="list-style-type: none"> • Road Closure Official – super important Key Role, keep the road closed, keep everyone safe – great spectating • Control Official – another key role, get cars into right order, release at intervals as directed – see cars up very close • Spectator Marshal – set up an area as instructed, keep spectators safe, answer questions, hand out information-cool viewing • Parking Marshal – assist at street party/lunch breaks and the like by keeping the competitor cars correctly parked • Service Park – work direct with the competitors, ensure an orderly area and start for the event to work well – great access to cars and crews
<p>What if something happens and I don't know what to do?</p>	<p>Experienced officials will always be available if you need help to handle a situation. Key 'phone numbers are on your swinger. Start with your Stage Commander, escalate if you need to</p> <p>Never go backwards on a stage, and NEVER let anyone past your road closure point unless you are 100% positive and Rally Control has OK'd it</p>
<p>Do I need a license to be an official?</p>	<p>It is generally encouraged that all Officials hold an appropriate current Motorsport Australia officials' licence. If you don't have a license, we can arrange trainee official forms for you on the day of the event. Alternatively, you can obtain a General Officials license</p>



VOLUNTEER Frequently Asked Questions Answered

	on the Motorsport Australia website (https://motorsport.org.au/officials).
Can I volunteer with a friend?	Absolutely. If you would rather not volunteer alone, why not volunteer with a friend? Each of you should submit a registration form - and include a note of the name of the friend you want to work with.
Can I bring other friends and family along?	You are welcome to bring family and friends along to the event – but please remember that unless they are registered officials, they are spectators, and should remain in safe areas. Only registered officials that have signed on are permitted into areas where officials are working.
Do I have to sign on?	Yes. You need to sign on every day. We do this via QR code on location. Be sure to seek this out and be sure to sign on each day. It triggers insurance, and is proof of presence
Can I bring my dog with me?	No. No pets at all please It is best not to risk it. Your job is to concentrate on your role, and not to be looking after a pet
What are some key things to keep in mind?	<ul style="list-style-type: none"> ✚ BE CONFIDENT IN YOUR ROLE ✚ READ THE MANUAL ✚ WATCH THE VIDEOS ✚ BE FRIENDLY BUT FIRM ✚ BE UNFAILINGLY PLEASANT TO EVERYBODY ✚ KEEP IT SIMPLE ✚ WE CAN DO IT ✚ OWN YOUR STAGE and MAKE IT HAPPEN ✚ BE ON TIME, BE ON TIME, BE ON TIME <li style="background-color: yellow;">✚ IF UNABLE TO ATTEND INFORM YOUR STAGE COMMANDER ✚ IF UNABLE TO ATTEND ALSO INFORM ivar@rallysa.com.au <p>Remember, this is YOUR event – did we mention BE ON TIME?</p>
What should I bring with me?	Your mobile phone, basic tools, wet and cold weather gear, a pop-up shelter, good shoes, food and drink, garbage bags for rubbish at a minimum. Plan to be self sufficient
Are there age limits?	Children under 12 cannot be registered, children under 14 can only work in a non-competition area, children 16 and over can be alongside a competition area, and anyone under 18 must have a parental/guardian consent form lodged with us
Are drones OK to use?	The use of drones is prohibited unless specifically approved by MA



VOLUNTEER Frequently Asked Questions Answered

<p>Is there a reference manual?</p>	<p>Yes, a detailed manual may be supplied with your rally box, and will be available online at www.rallysa.com.au</p> <p>Its full of information, and covers everything you need to know</p>
<p>Is there an official Rally Guide for this event?</p>	<p>Yes, and it is a MUST read – there is lots of stuff you need to know. Look for it at www.rallysa.com.au</p>
<p>Is the Rally Guide updated regularly?</p>	<p>Yes, check the website for the latest updated version which will be numbered and dated</p>
<p>Will there be an officials' briefing?</p>	<p>Briefing materials may be available online for download and sign off. You will be notified of any other briefings – and there may be physical briefings such as SAPOL marshal's training</p>
<p>What happens if I need to approach a competitor who has had an accident?</p>	<p>It is best to maintain social distancing, however if any intervention is required you might want to wear a mask and gloves. MIVs will attend as required and tasked.</p>
<p>What happens if I am caught speeding coming to the event?</p>	<p>SAPOL know of the event and may well be present in the region. Any fines you may incur are your problem. Our advice? DO NOT SPEED ANYWHERE</p>
<p>Where is Rally HQ?</p>	<p>You have no need to go there – all communication is to be strictly via your Stage Commander or Senior Official</p> <p>Names and contact details will be published in the Rally Guide</p> <p>Main 'phone numbers are on your card</p>
<p>Where is the event held?</p>	<p>The service park is in ROWLAND FLAT, and all stages are in the area between Cambrai in the East, Annadale in the North, Gawler in the West, and Kersbrook in the South.</p>
<p>Will I need accommodation in the region?</p>	<p>That is up to you. There is one night and one day of competition. Lots of people camp in their motorhomes on course. There are plenty of other camping and overnight options in the region. Check the Rally Guide, and visit Barossa websites for details</p>
<p>How will communications between Rally Control and Officials occur?</p>	<p>General on-event communications will be done via phone, text and email only. Be sure to have lodged all relevant email addresses and mobile phone numbers with us.</p> <p>In any situation, first port of call is your stage commander. DO NOT ring the emergency line unless you have a genuine emergency and cannot get the Stage Commander</p>



VOLUNTEER Frequently Asked Questions Answered

<p>Are email details required for everybody?</p>	<p>Yes, EVERYBODY should lodge their email addresses with us, and mark us as a "safe Sender".</p> <p>The idea is that we will send all communications to everyone on the "officials" database. Check often please, don't miss out on any comms</p> <p>Also, please check your junk folder regularly just in case</p> <p>Also, we will be deploying an online notice board via an app called SPORTITY. Code is RB24</p>
<p>Someone from a media organisation comes to me for comment or information. What do I do??</p>	<p>Refer all media (politely) to Media Managers WAYNE and GERALDINE HOUGH. Call him on 0448 889 000 or her on 0431 306 015</p> <p>Media do not have vehicle access via road closures. Do not let them onto the course with a vehicle. They can walk in if they have event credentials, and a media vest. Otherwise, NO GO</p> <p>DO NOT TALK TO MEDIA ABOUT ANY INCIDENT DETAIL EVER – always refer to the media persons, Wayne and Geraldine Hough, or Rally Control</p>
<p>What do I do if a Media person won't follow instructions?</p>	<p>Report via mobile to your Stage Commander or inform any course car personnel or both. Take a picture, and send it to your stage commander if you can</p>
<p>Can I have any alcoholic drinks at the event?</p>	<p>All Motorsport Australia events require ZERO alcohol be maintained always. Authorised Testing Officers may be present, and random testing is always probable. Don't risk it – be ZERO.</p>
<p>Can I spectate at the MSS Safety Rally Barossa?</p>	<p>Yes, if you are at a road closure, you have your own private spectator point. No photo taking though. You have a job to do</p>
<p>Will there be a post event function?</p>	<p>There will be a free BBQ at the service Park in Rowland Flat. All Officials welcome, just show your credential</p>
<p>If I am on a road closure, how important is it to be firm about access to the course?</p>	<p>IT IS VERY IMPORTANT, VERY VERY IMPORTANT</p> <p>There is no traffic access to the rally course via any road closure. This includes media vehicles</p> <p>MIVs bearing a window sticker ADMIT TO STAGE AT ANY POINT may enter the stage at any time as can CFS, Police and Ambulances – all ONLY with the authority from Rally Control</p>
<p>Is there a no wheel-spin rule and if so why?</p>	<p>Yes, a no wheel-spin rule will apply. This rule has been put in place to conserve the roads and minimise any impact on the local community who use the roads daily. It is part of our 'tread lightly' approach to running the event.</p>



VOLUNTEER Frequently Asked Questions Answered

I have heard there is a best Stage Award. What is it?

Every year, we make a Best Stage Award, which is a perpetual cup, with the Stage Commander keeping a replica.

It also includes commemorative medallions for all the officials involved

At the **MSS Safety Rally Barossa** 2023, the winning stage was LAZER LAMPS PIPPILINI, run by Andrew Krieger



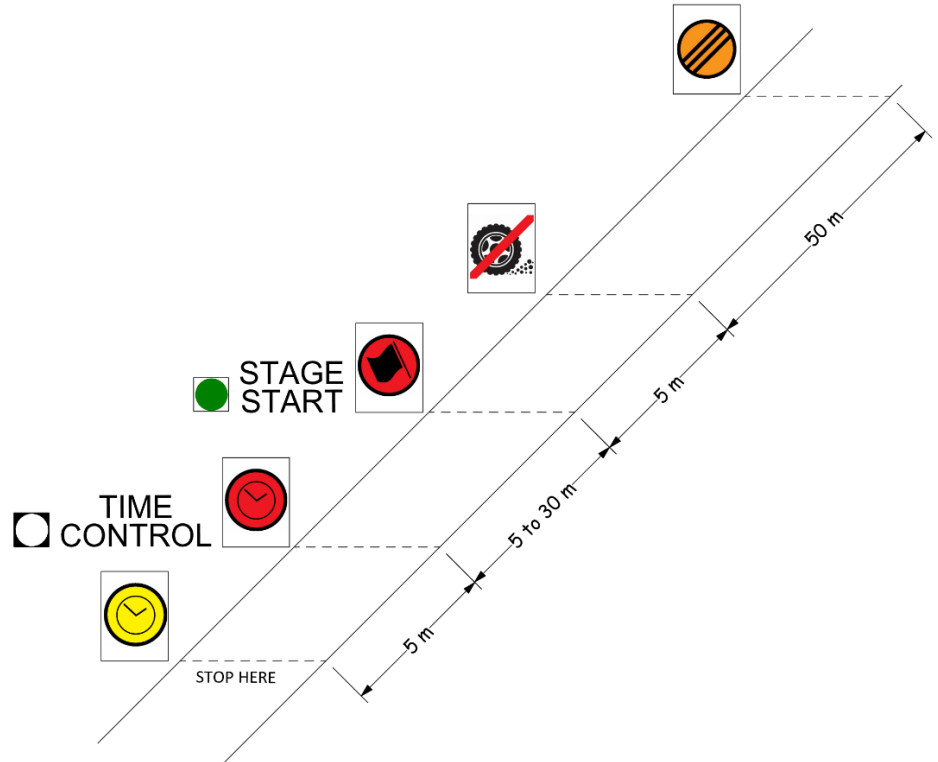
These are unique mementos that each official can be proud of winning, and of being in a winning team

Officials get the best view at their own private spectator point

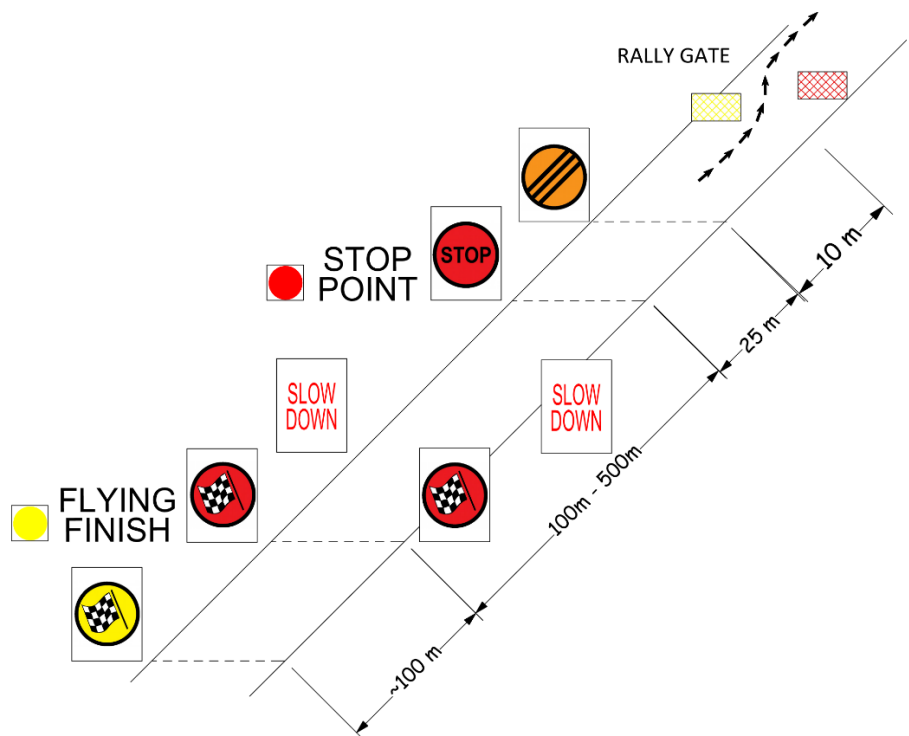


VOLUNTEER Frequently Asked Questions Answered

What does the Start of Stage Setup look like?



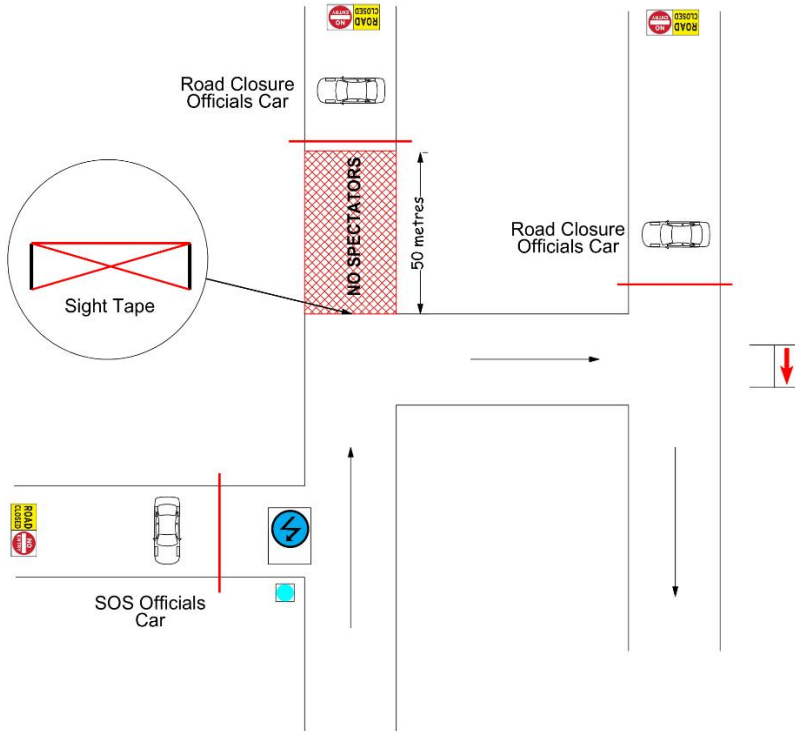
What does the End of Stage Setup look like?



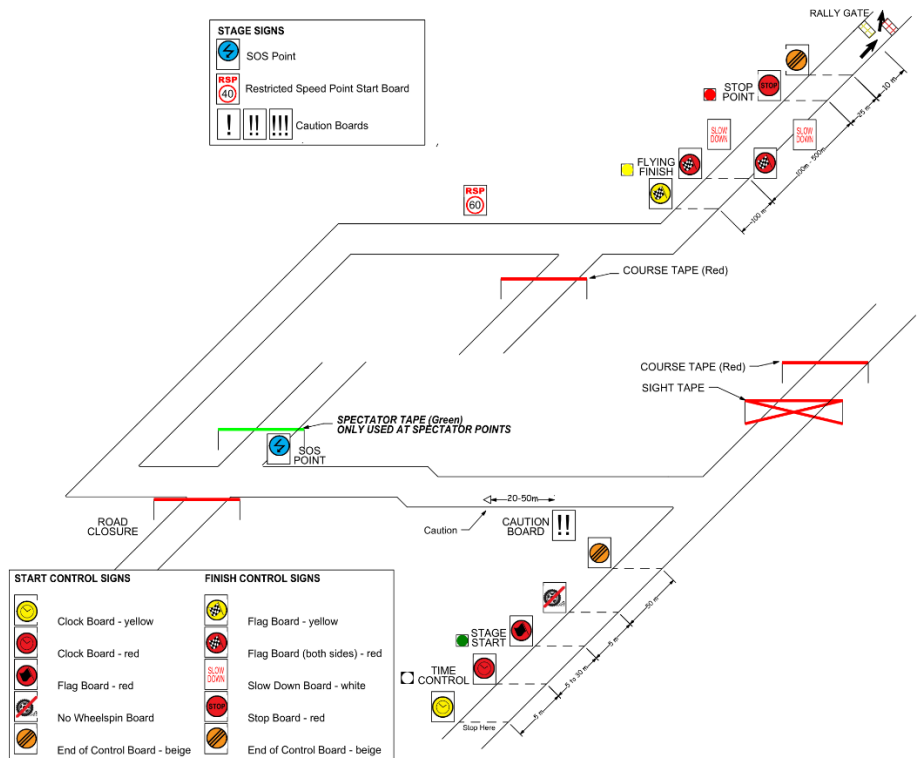


VOLUNTEER Frequently Asked Questions Answered

What does Mid Stage Setup look like?



What does the Overall Stage look like?





VOLUNTEER Frequently Asked Questions Answered

